



The background is a stylized, layered landscape. At the top, a sun with long, thin rays is rendered in various shades of blue. Below the sun are white, jagged mountain peaks. The middle ground consists of rolling hills in shades of light blue and green. In the foreground, a dark blue river flows through a vibrant green valley. The overall style is clean and modern, using flat colors and simple shapes.

Countywide Vision Water Element

Kirby Brill, Mojave Water Agency
Bob Tincher, San Bernardino Valley Municipal Water District

August 23, 2013

Countywide Water Element Vision

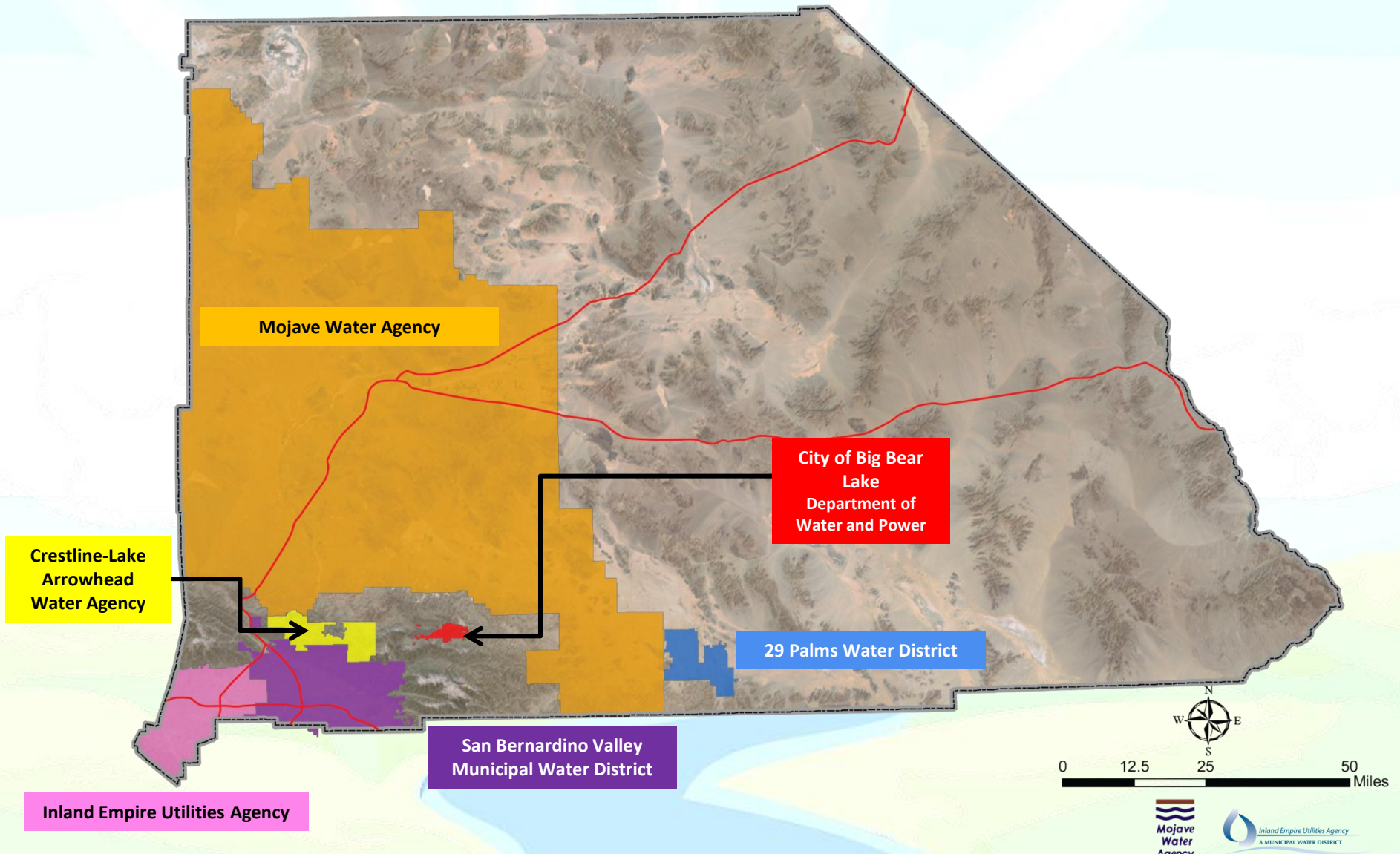
Problem Statement: Improve countywide effort to plan and manage water resources in San Bernardino County

Vision: Develop a **comprehensive** countywide strategy for water management that encourages **collaboration** among business, residents, municipal governments, and water agencies that will:

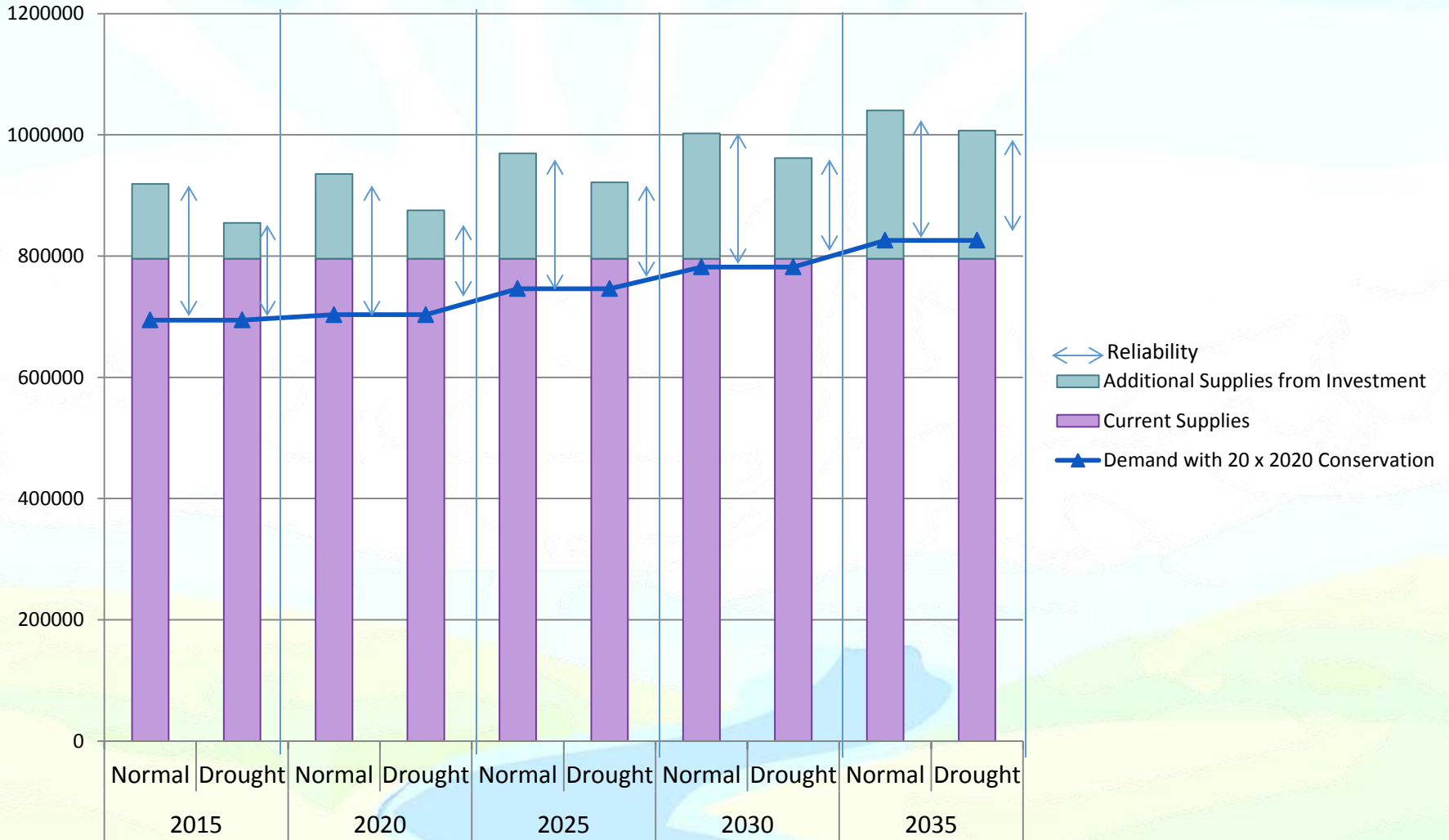
- ✓ Address **multiple** watersheds and water agencies
- ✓ **Build** institutional and organizational capacity for future countywide planning efforts
- ✓ Create mutually beneficial investment opportunities to ensure adequate water supplies and quality to support future population and economic **growth** within the County

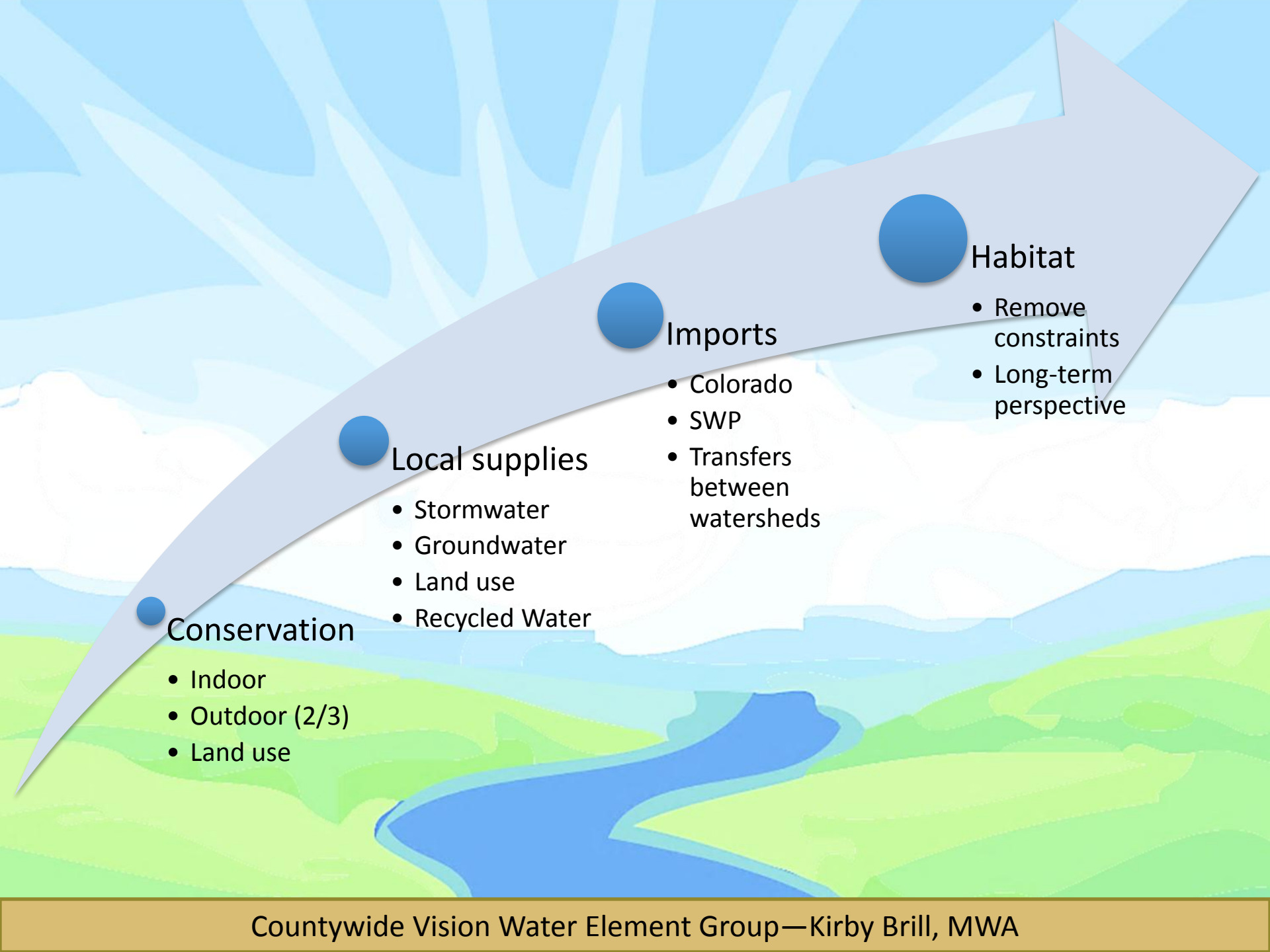
The water needs of County residents and businesses can be met through 2035, but only if water users step up **conservation** efforts and the whole community is willing to **invest** in projects that will store and protect additional water supplies.

Where we live in the County



Review: Inventory Results





Conservation

- Indoor
- Outdoor (2/3)
- Land use

Local supplies

- Stormwater
- Groundwater
- Land use
- Recycled Water

Imports

- Colorado
- SWP
- Transfers between watersheds

Habitat

- Remove constraints
- Long-term perspective

Water Element Tasks

- County-wide inventory of Water **Conservation** Programs
- County-wide inventory of land to protect for **local** stormwater recharge

No problem?

Unreliable

Reliable

Infrastructure (\$\$)

Infrastructure (\$\$\$)

Less import

Import

Less rain

Rain

10% by 2020

20% by 2020

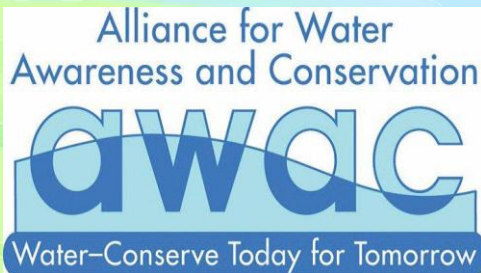
Water Conservation

Indoor (1/3 use)

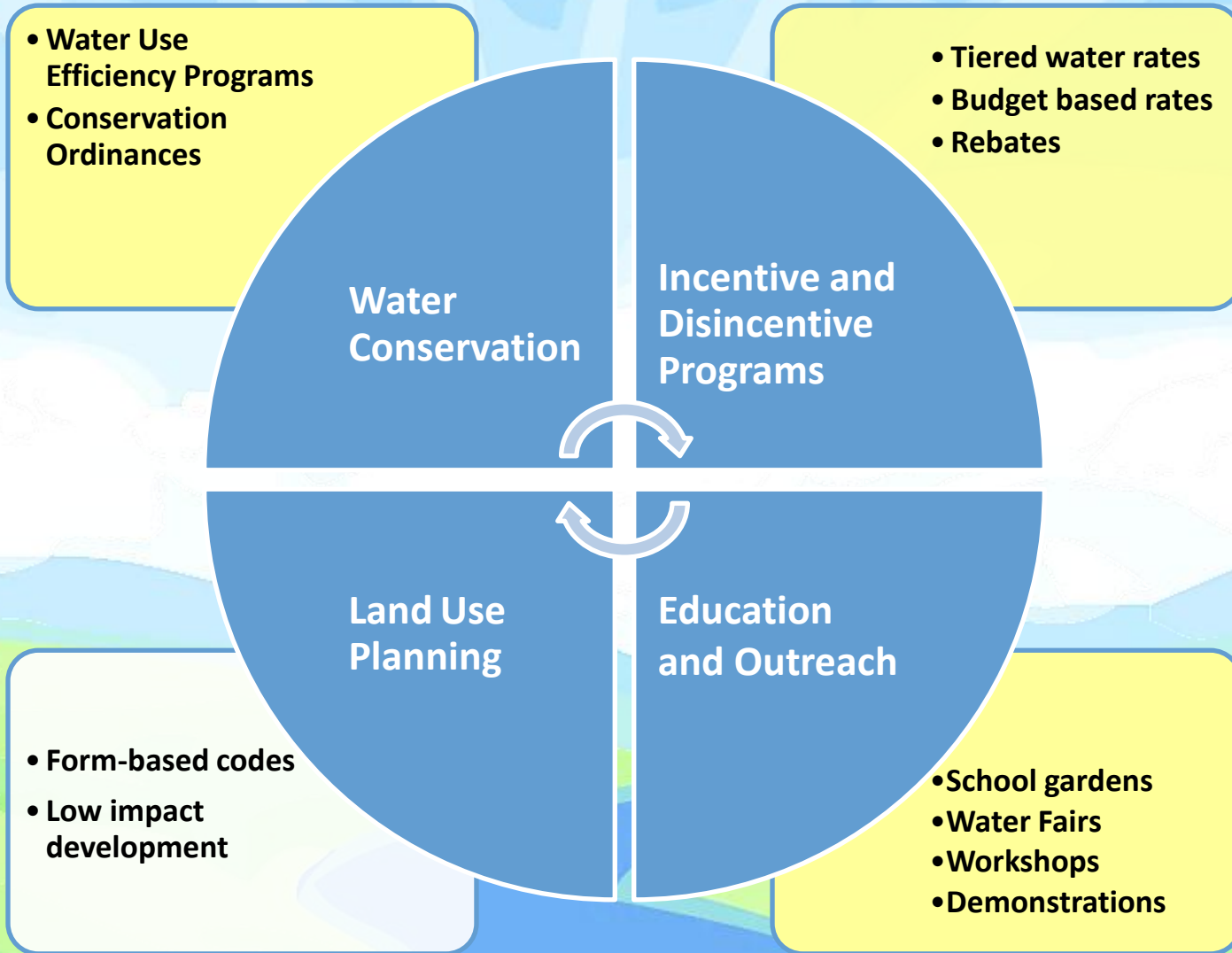
- Toilets
- Shower heads
- Clothes washers
- Dishwashers
- Sink aerators

Outdoor (2/3 use)

- Turf replacement
- Low water use plants
- Smart timers
- Sprinkler nozzles
- Drip irrigation

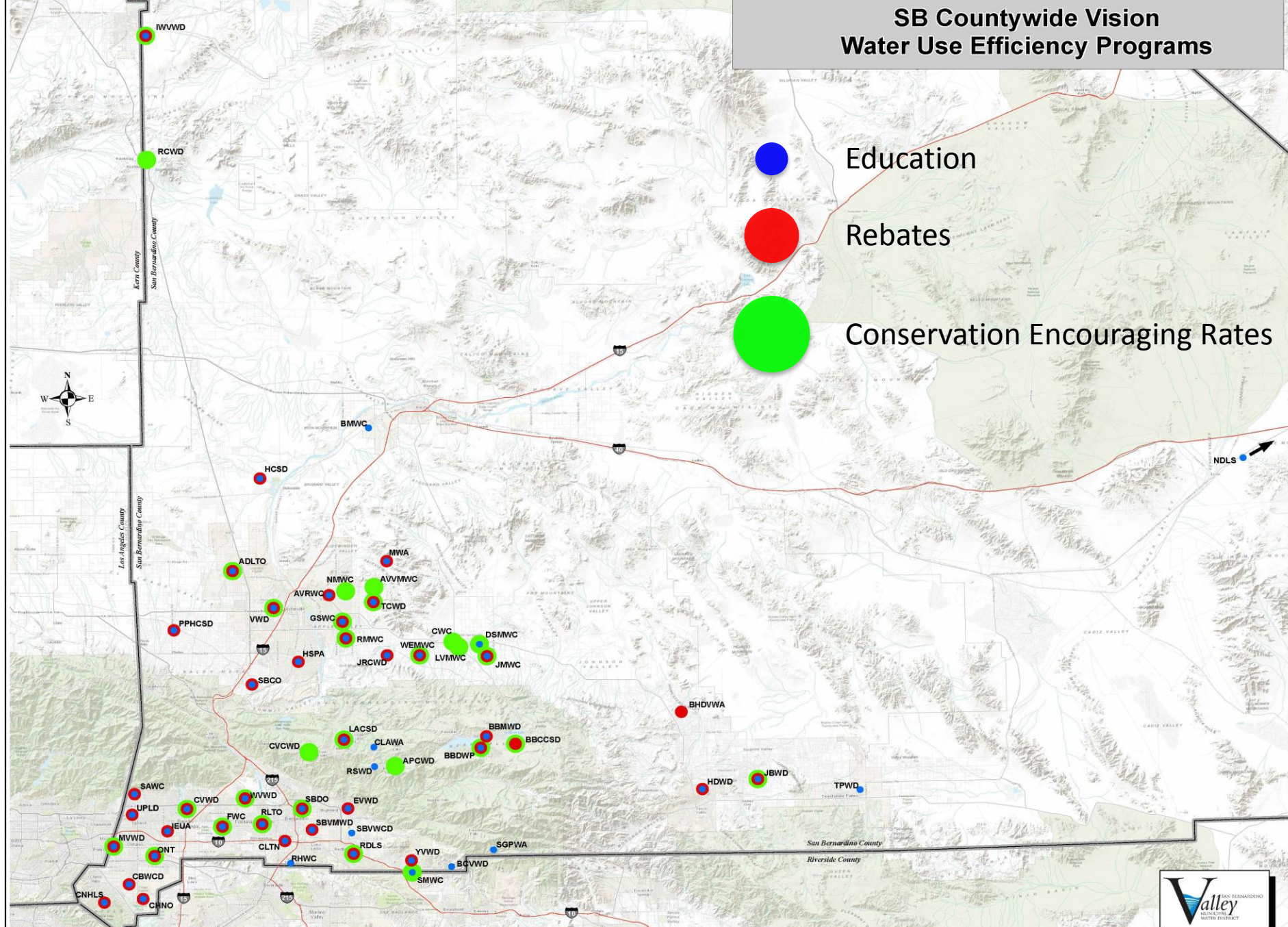


CONSERVATION



SB Countywide Vision Water Use Efficiency Programs

- Education
- Rebates
- Conservation Encouraging Rates



Where *will* we live in the County?

Likely

- In water agency boundaries

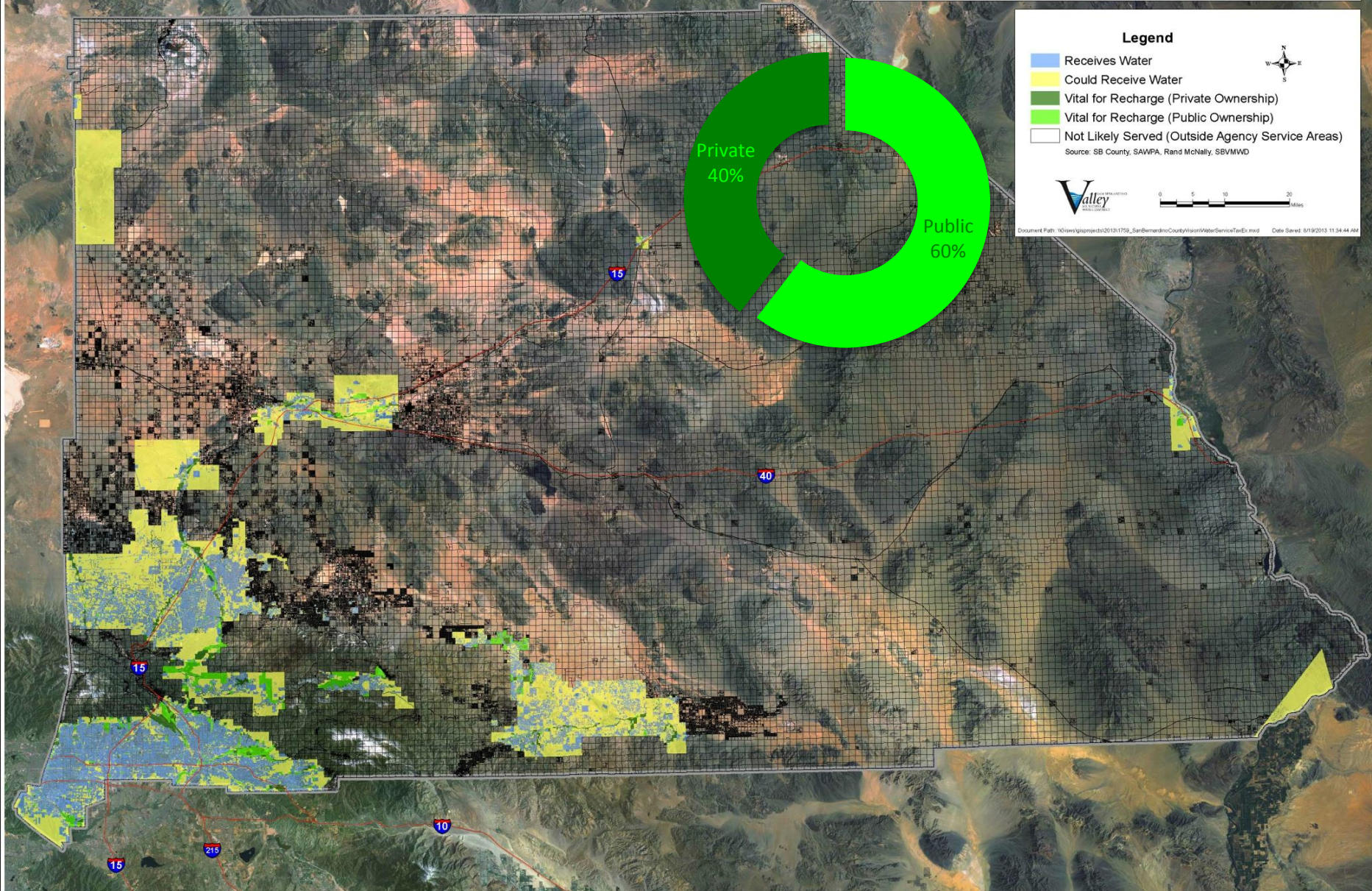
Not Likely

- Outside water agency boundaries

Protect

- Areas to recharge local rain [and imported water]

SB Countywide Vision Retail Water Service by Parcel



Legend

- Receives Water
- Could Receive Water
- Vital for Recharge (Private Ownership)
- Vital for Recharge (Public Ownership)
- Not Likely Served (Outside Agency Service Areas)

Source: SB County, SAWFA, Rand McNally, SBVMWD

0 5 10 20 Miles

Document Path: Y:\views\gis\proj\2013\11759_SanBernardinoCountyVisionWaterServiceTaxEx.mxd Date Saved: 8/19/2013 11:34:44 AM

Water Element Next Steps

- Make county-wide water conservation program inventory available **online**
- Work with **land use** planning agencies to protect land for stormwater and imported water recharge and to review landscaping ordinances



We can make this a reality.
But, not without **your** help.